



# February

## ThinkHealth News 2024

Software Thinking and Standing with You

### Customers Hot Topic

#### HIE UPDATE

#### HEALTH INFORMATION EXCHANGE

- Progress Statistics - Averaging >35,000 Unique Patient's records accessed monthly
- HIE participation can be expensive:
  - Data Connections: \$5k-\$10k per data feed connected
  - Ongoing Participation costs: monthly fees vary by provider type
- Providers have a choice in participation; all exemption requests will be granted
- HIPAA Compliance: SDE HIE policies are more restrictive than HIPAA and providers must be in a treatment relationship to access records and attest to that at the time of access
- No Substance Abuse 42 CFR Part 2 data, or psychotherapy notes go into the HIE.
- Providers can mark charts or encounters as sensitive, and not sent.

[Click Here for More Information on HIE](#)

#### Transition to

#### Managed Care Organizations (MCO)

#### 3 MCOs have been chosen

- Aetna Better Health of Oklahoma
- Humana Healthy Horizons of Oklahoma
- Oklahoma Complete Health

#### All 3 MCE's will:

Utilize Availity. Each payer will be considered as part of Availity's basic payer which is free to transmit. All the MCEs are still planning to meet the **April 1st** go live date.

**ThinkHealth** currently bills with Availity as one of our clearinghouses.

Become a member, and we can connect you with the Managed Care Entities (MCEs).

[Click Here for More Information on MCO](#)

[Click Here for Free Demo](#)



### Agency Events and News

LEAP is an evidence-based communication approach developed by Dr. Xavier Amador, clinical psychologist and forensic expert that helps create therapeutic and trusting relationships with people who have Anosognosia — a neurocognitive symptom that leaves a person unable to understand they are ill, resulting in conflict, isolation and treatment refusal. Join us for an introduction to critical anosognosia research and The 7 LEAP Tools



[Click Here for More](#)

#### How to Coach Through Grief & Loss

Grief is with us always. How can you support their journey with grief and ensure that they are ready to carry on with all that their heart holds? In this program we prepare you for grief's long journey with rituals and practices that can be utilized should the grief become too heavy.

[Click Here for More Information](#)



#### Infertility 101: An Introduction

The purpose of this training is to introduce mental health providers to the mental health aspects of infertility, the complexity of fertility treatments, and the ways in which providers can be helpful to their clients who are navigating fertility decision-making and/or distress.

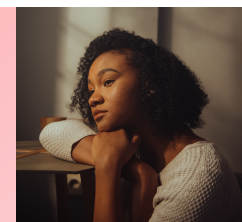
[Click Here for More Information](#)



#### How to Take Control of Your Mental Health

How do you get rid of stress, anxiety and uncertainty? These emotions are buried deep in your reactive mind. Find out what the reactive mind is, and in the process find yourself. Come learn all about how to take control of your mental health.

[Click Here for More Information](#)



## Mental health care in Oklahoma City is expanding with help from MAPS 4.

City Council announced the operators of a multi-million-dollar mental health project, which includes a restoration center, crisis center and mental health housing. Through MAPS 4, \$44 million was set aside for the Mental Health and Addiction project, a project Jeff Dismukes, the executive director of Depression and Bipolar Support Alliance of Oklahoma, said could transform the city. City Council announced on Tuesday that Northcare, a community behavioral health clinic, will operate the \$24.5 million restoration center and the state Department of Mental Health and Substance Abuse will be the operating partner for the crisis center.

[Click Here for More Information](#)

### VA Says Nearly 50K Veterans Used Emergency Suicide Prevention Program in its First Year

Nearly 50,000 veterans made use of an emergency suicide prevention program that was launched by the Department of Veterans Affairs last year.

The VA announced that 49,714 veterans and former service members took advantage of a new benefit that allowed them to go to any VA or non-VA health facility to get free emergency care if they were experiencing an acute suicidal crisis.

The department said the benefit not only offered potentially life-saving health care, it saved more than \$64 million in health care costs.

The department said the new policy allowed those experiencing a suicidal crisis to get necessary care, including emergency room visits, up to 30 days of inpatient or crisis residential care, up to 90 days of outpatient care and transportation costs.

[Click Here for More Information](#)



## Mark Your Calendar

**Month of February**

[Black History Month](#)

**February 4**

[World Cancer Day](#)

**February 11**

[Super Bowl Sunday](#)

**February 14**

[Valentines Day](#)

**February 17**

[Random Acts of Kindness Day](#)

**February 19**

[Presidents Day](#)

[Click Here to Subscribe our Newsletter](#)



Questions or comments? Email us at [onsmarketing@orionnetsystems.com](mailto:onsmarketing@orionnetsystems.com) or call 405.286.1674  
To remove your name from our mailing list, please [click here](#).